

# Dehumidifier RECUSORB R-062/082/102/122

Dehumidifying capacity  
at 20°C / 60%RH

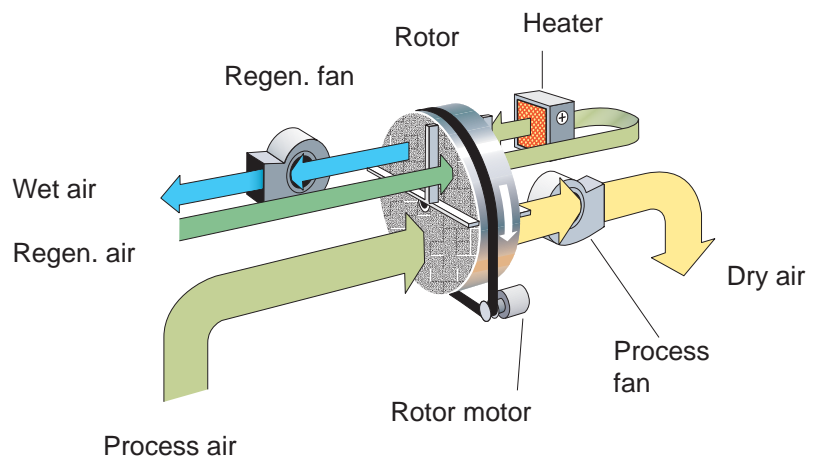
**18 - 95 kg/h**

Dry air flow

**2600 -13500 m<sup>3</sup>/h**

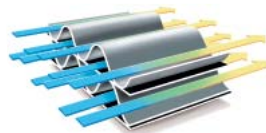


- Washable rotor
- No desiccant carry-over
- Double skin insulated
- Built-in heat recovery
- Low dry air temperature
- Long lifetime



Contains the SSCR rotor  
-one step ahead in  
adsorption technology

The high number of channels  
means that moisture is adsorbed  
with extra efficiency!

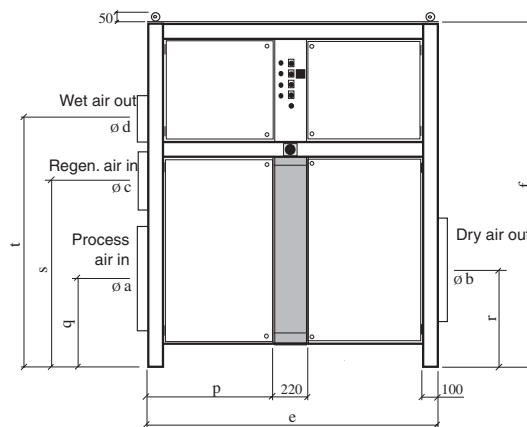
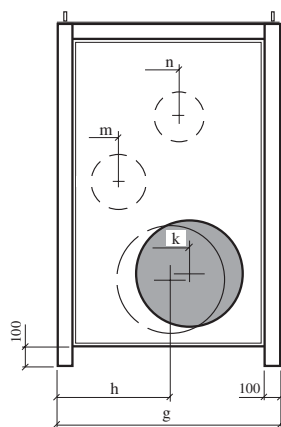
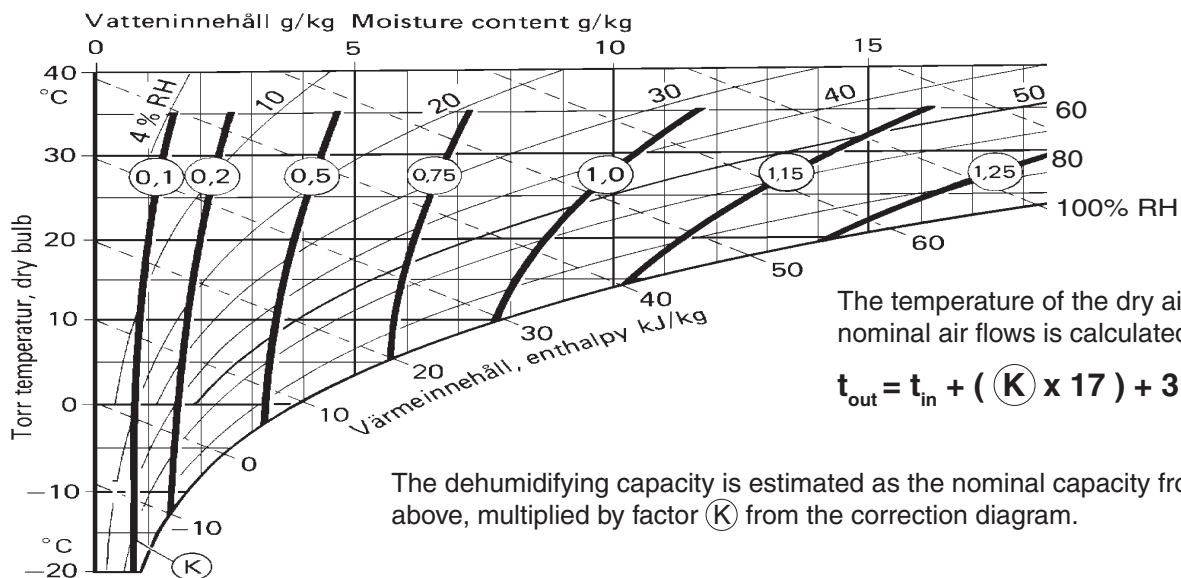


Dehumidifier model	R-062	R-082	R-102	R-122
Nominal capacity *	18 kg/h	37 kg/h	59 kg/h	95 kg/h
Dry air flow **	2600 m <sup>3</sup> /h	5500 m <sup>3</sup> /h	8200 m <sup>3</sup> /h	13500 m <sup>3</sup> /h
Static pressure at disposal	200 Pa	200 Pa	200 Pa	200 Pa
Wet air flow **	850 m <sup>3</sup> /h	1900 m <sup>3</sup> /h	2900 m <sup>3</sup> /h	4700 m <sup>3</sup> /h
Static pressure at disposal	200 Pa	100 Pa	100 Pa	100 Pa
Heater power ***	21 kW	42 kW	66 kW	112 kW
Maximum electric consumption	24 kW	49 kW	76 kW	124 kW
Supply fuse 3x 230/400V 50Hz	80 / 35 A	160 / 80 A	250 / 125 A	/ 200 A
Weight	438 kg	550 kg	760 kg	1210 kg

\* Valid for inlet conditions 20°C/ 60%RH. For other inlet conditions the capacity can be calculated by using the correction factor from the diagram shown below.

\*\* Volume flow for density 1,20 kg/m<sup>3</sup>.

\*\*\* Available with electric heater, steam heater or gas heater.



R-	062	082	102	122
a	400	500	630	800
b	315	400	630	800
c	200	315	400	500
d	200	250	315	400
e	1400	1600	1800	2000
f	1650	1800	2100	2300
g	780	1000	1300	1500
h	390	500	650	640
k	510	640	810	960
m	390	340	350	400
n	230	450	770	780
p	590	690	790	890
q	400	450	510	600
r	420	490	570	630
s	790	930	1080	1350
t	1120	1290	1540	1680

[mm]

Subject to change without notice.  
Download installation drawing at [www.dst-sg.com](http://www.dst-sg.com)